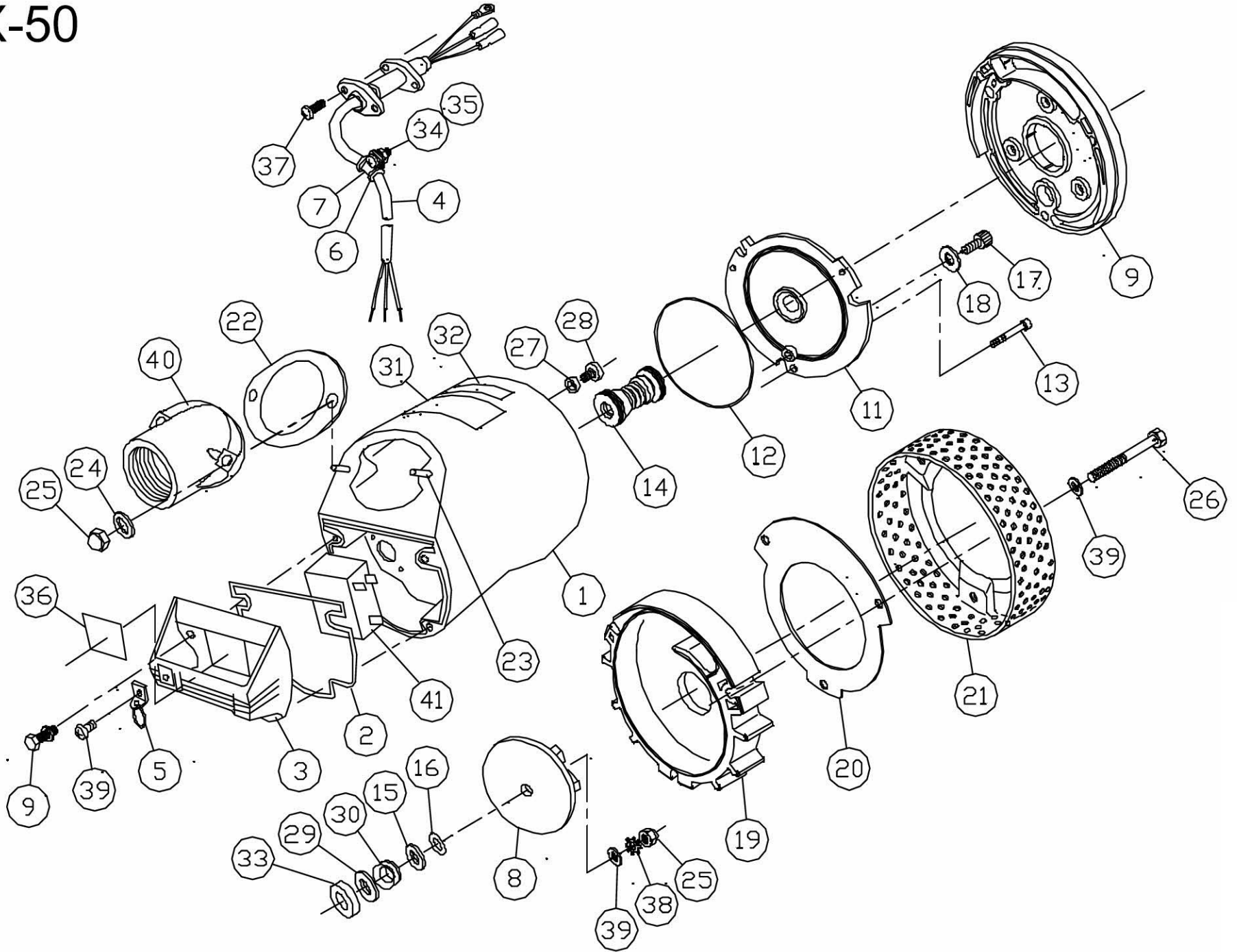


# PX-50



**DRG No.0438564 MODEL: PX-55022 FORM: PX-55022-BAB**

No.	Parts Code	Parts Name	QTY	Material	Remarks
1	0438089	PX-5022 400W MOTOR ASSAY	1	PX-50D	
2	0430284	PX-50 HEAD PACKING	1	NBR	
3	0430268	PX-50 HANDLE	1	ADC	
4	0438075	PX-50 POWER CORD CE	1		
5	0438066	PX-50 CHAIN SET	1		
6	0390031	PS-40 CORD SUPPORTER	1	CR	
7	0260018	BL-3224 CORD BAND	1	SUS	
8	0430285	PX-50 50Hz IMPELLER	1	NBR	
9	0430273	PX-50 BACK LINER	1	NBR	
10	743605031	HEXAGON BOLT	4	M6X18	
11	0430271	PX-50 FRONT COVER	1	ADC	
12	889955125	O RING	1	G125 NBR	
13	734505037	SOCKET BOLT	3	M5X20	
14	0390003	PS-40 MECHANICAL SEAL	1	DE560	
15	0430300	PX-50 IMPELLER WASHER	1	SUS304	
16	0390025	PS-40 ADJUSTING WASHER	2	SUS	
17	0390037	PS-40 SOCKET BOLT	1	M10X12	
18	854255010	SEAL WASHER	1	M10	
19	0430274	PX-50 CASING	1	NBR	
20	0430269	PX-50 SUCTION	1	SUS304	
21	0430270	PX-50 STRAINER	1	SPCC	
22	0430283	PX-50 DELIVERY PACKING	1	NBR	
23	0430290	PX-50 BOLT	2	M8X36X11/21	
24	846005008	WASHER	5	M8	
25	835305008	NUT	3	M8	
26	735705162	HEXAGON BOLT	3	M8X70	
27	0340142	SM SEAL RING	1	NBR	
28	0340153	SM BIND SCREW	1	M6X8	
29	0430301	PX-50 THRUST WASHER	1	SUS304	
30	895154014	OIL SEAL	1	VR14A	
31	0430297	PX-50 LABEL	1	UL	
32	0430311	PX-50 CAUTION LABEL	1		
33	0430299	PX-50 THRUST PACKING	1	CR70	
34	703305100	+ SCREW	2	M5X10	
35	827305005	NUT	1	M5	
36	0430336	PX-55022-BAB-1 CE LABEL	1		
37	703305102	+ SCREW	2	M5X14	
38	845305008	WASHER	1	8B SUS	
39	846505008	WASHER	1	M8-1.6 SUS	
40	0430305	PX-50 DELIVERY FLANGE	1	ADC	
41	0430393	CONDENSER 220V	1		